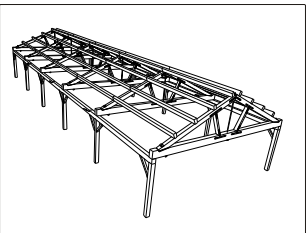
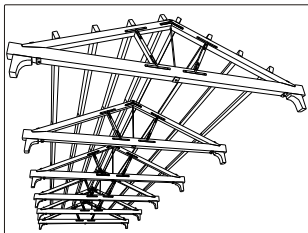
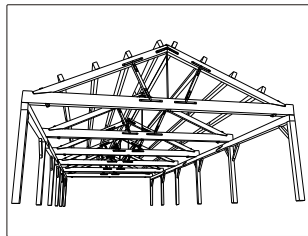


Roof Trusses *For sale*



Distinctive

These remarkable “industrial” style trusses were salvaged from a turn of the century foundry in Orillia, Ontario. The six trusses, each measuring 30 feet in width are connected with timber purlins that will span 18 feet to provide an overall structure size of 2700 sq. Ft.

Ideal for a commercial or residential use, these hand built Douglas Fir trusses boast charm and character while creating an atmosphere of warmth and distinction.

Winery Greenhouse
 Pool enclosure
 Restaurant *Studio*

- Six Douglas Fir trusses-
 - 30 feet wide
 - Includes purlins and timber post and plate system with knee braces.
 - Foot print size 30' x 90' -2700 sq. Ft.
 - ~~-\$129,000.00 USD~~ *Now \$89,000.00*
- Professional design, construction and installation also available.

Thistlewood
 Timber Frame Homes

Contact Todd McGowan
 Sales Manager

1-800-567-3280 homes@thistlewoodtimberframe.com